

TENOR SAX

BACKSEAT MANEUVERS

ADAM COHEN

SHUFFLE ♩ = 118

INTRO

(BASS & DRUMS) (KEYS)

(A) G7

(B) Bbmaj7/C C13 Bbmaj7/C C13

TO CODA

(C) Am7/D Bbmaj7/C Am7/D Cm7/F

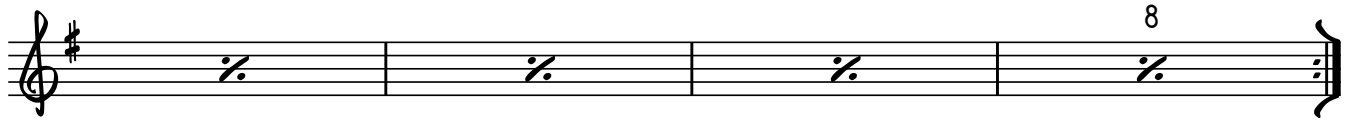
Am7/D Bbmaj7/C Bb13 Abmaj7/Bb

(D) G7

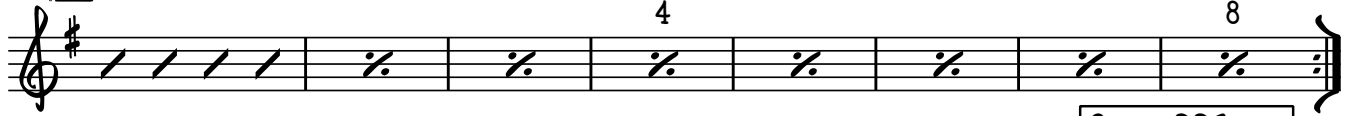
(SOLOS)

Bbmaj7/C C13 Bbmaj7/C C13

2 G7



(E) Am7/D Bbmaj7/C Am7/D Cm7/F Am7/D Bbmaj7/C Bb13 Abmaj7/Bb



SOLOS: DDE
AFTER LAST SOLO,
D.C. AL CODA

Am7/D Bbmaj7/C Am7/D Cm7/F Am7/D

